

# Firehouse Museum



## Case Study SupraTile Interlocking Tiles

**Client**  
Long Branch Firehouse NJ

**Location**  
Long Branch - NJ

**Project**  
Firehouse Museum

**Product**  
SupraTile 7MM Textured

**Size**  
1,600 square feet

**Timeline**  
1 Day

**Color**  
7mm Industrial Dovetail  
Textured Dark Gray

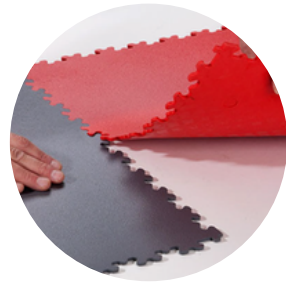
The town of Long Branch was looking to restore an older municipal building and their public works department chose SupraTile since they did not want a traditional epoxy floor or coating system. The floor also was not completely level so they needed a tile that was somewhat flexible and extremely durable and they chose the 7mm Industrial Dovetail SupraTile in Dark Gray.

### Challenges

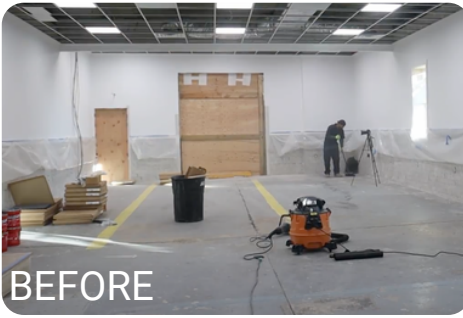
Floor was not even and the town did not want to go through a multi day floor preparation and installation for a durable floor.

### Solution

Long Branch installed the SupraTile 7MM dovetail textured pattern known for its top-tier durability. Since they will store classic automobiles, buggy carriages, and other vehicles, we recommend they glue the tiles down for extra protection. They used SupraTile's one part adhesive to glue the tile to the surface since there will be heavy automotive traffic in the space. This choice not only provides robust flooring for heavy equipment and vehicles but also adds a touch of a nice finish with its textured design. Two people installed the floor in 1 day.



SupraTile 7MM Textured



## Features

- Easy to install
- Each tile holds up to 20,000 lbs
- Chemical resistant
- Easy to clean
- Highly water resistant
- Warm and comfortable underfoot
- Easy to remove and relay

